

Bloomberg

Bloomberg Software Installation Manual **English**

28 October 2010
Version: 8.5

Table of Contents

Download the Bloomberg Software2

Testing the Bloomberg Terminal.....13

Minimum File and Registry Rights for the Bloomberg Application.....16

Download the Bloomberg Software

From Internet Explorer or other Standard WEB Browser, enter the following URL in the Address field to download the complete Bloomberg installation package.

<http://www.bloombergsoftware.com>

Professional Software Support - Bloomberg - Windows Internet Explorer

http://www.bloomberg.com/professional/software_support/

HOME NEWS MARKET DATA PERSONAL FINANCE TV RADIO more

Bloomberg Anywhere Professional Solutions About

Log in NEW YORK LONDON TOKYO

Bloomberg Professional

Software Support

» Bloomberg Professional Service

- New Installation**
(237 MB, Version 08-October-2010)
Includes all files needed to install and run the Bloomberg Professional service.
[Download](#)
- Upgrade existing**
(197 MB, Version 08-October-2010)
Updates all components of an existing installation of the Bloomberg Professional service.
[Download](#)
- [Professional Release Notes](#)

» UPGR Screen Components

- Bloomberg Application**
(91.3 MB, Version 08-October-2010)
Update the Bloomberg Application
[Download](#)
- BBComm**
(8.21 MB, Version 07-October-2010)
Install or update the BBComm and API tools software
[Download](#)
- .NET Framework V3.5**

Important Links

- Contact Sales
- Customer Service Center
- Tech Support (Download Software)**
- Bloomberg Markets Magazine

Resources

- PC Requirement Specs
- Software Installation Manual
- Software Compatibility Matrix
- Minimum File and Registry Rights
- Transport and Security Specs (English)
- Bloomberg PHON
- Bloomberg for BlackBerry®

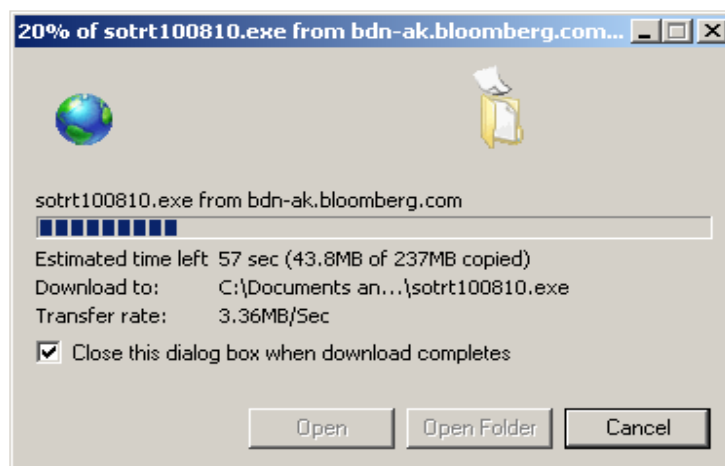
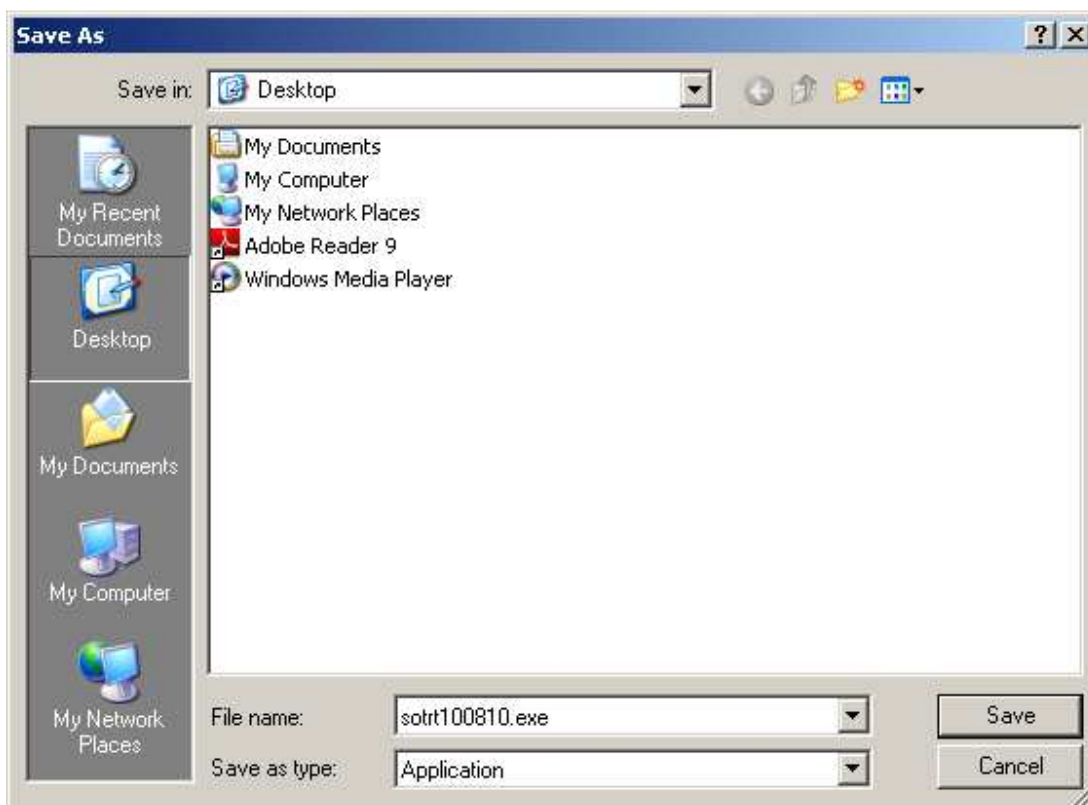
http://www.bloomberg.com/ Internet 100%

Click **Download** to perform a Full Installation.



Click **Save** to save the program to your desktop.

For 24 hour global customer support call +1 212 318 2000, +44 20 7330 7500, +65 6212 1000, +81 3 3201 8900 or press the HELP key twice on the BLOOMBERG PROFESSIONAL® service. **Bloomberg**



The figure above shows the progress of the software as it downloads.

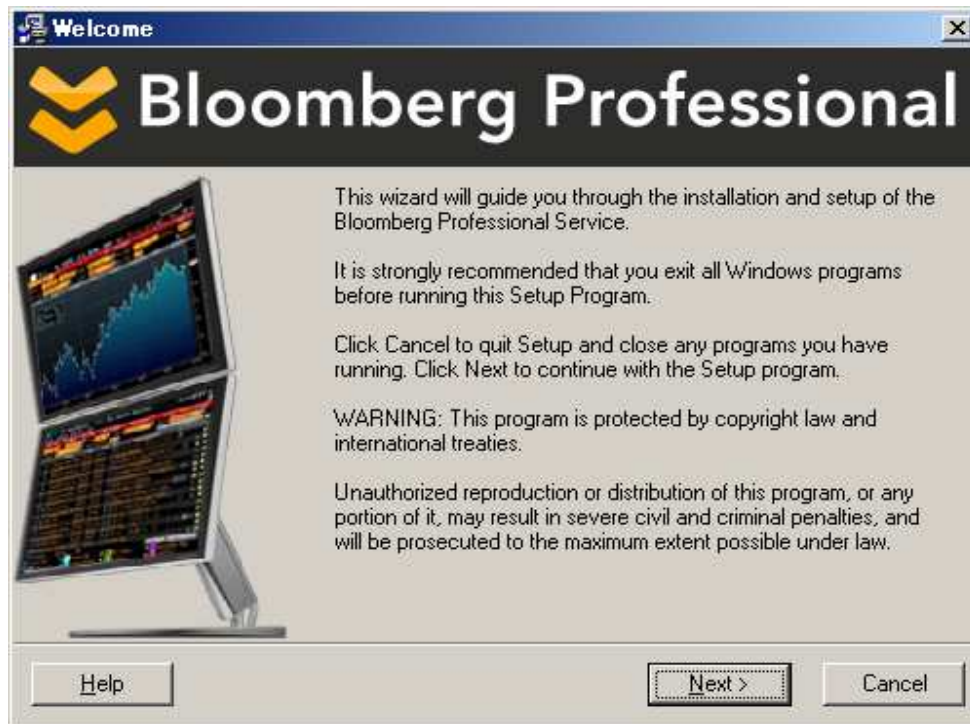


After the software download is complete, double-click the icon located on your desktop.

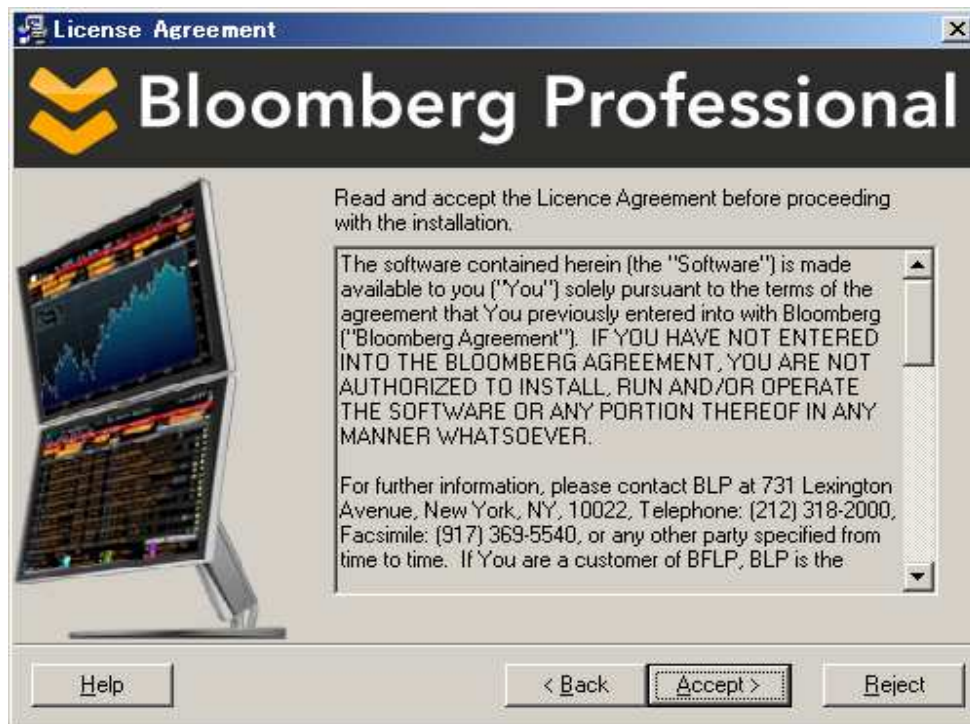
NOTE: Be sure to install the Bloomberg Professional® software under a login with Administrator rights.

For 24 hour global customer support call +1 212 318 2000, +44 20 7330 7500, +65 6212 1000, +81 3 3201 8900 or press the HELP key twice on the BLOOMBERG PROFESSIONAL® service. **Bloomberg**

This will execute the Wise Installation Wizard for the Bloomberg Professional® service.



Please click the **N**ext button to continue or **C**ancel to exit the installation.



Please review the License Agreement and confirm you agree to it by clicking the **A**ccept button. Should you not wish to accept these terms, please click the **R**eject button and the installation will be cancelled.

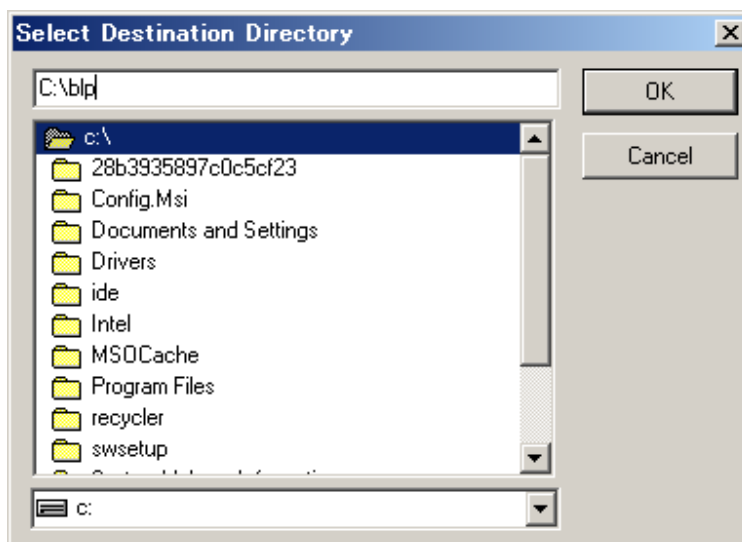
Please click  button in the Wizard if you need more assistance.

For 24 hour global customer support call +1 212 318 2000, +44 20 7330 7500, +65 6212 1000, +81 3 3201 8900 or press the HELP key twice on the BLOOMBERG PROFESSIONAL® service. **Bloomberg**



The default location for the installation of the Bloomberg Professional® Service software is automatically populated. Click on **Next** to accept this location and continue.

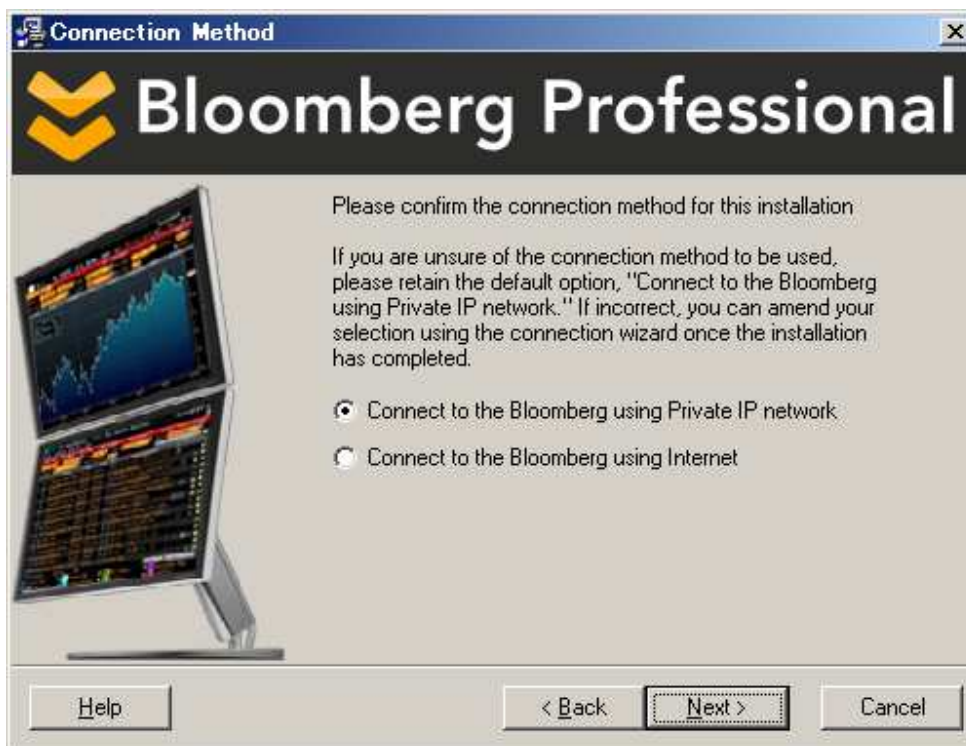
If you need to change the location, click on the **Browse** button to open a dialog box where you can enter or navigate to the desired location. Click on OK to return. Click on **Next** to confirm new location and continue.



Note: If the installer detects a previously installed version, the existing location will be respected and this screen will not be displayed.

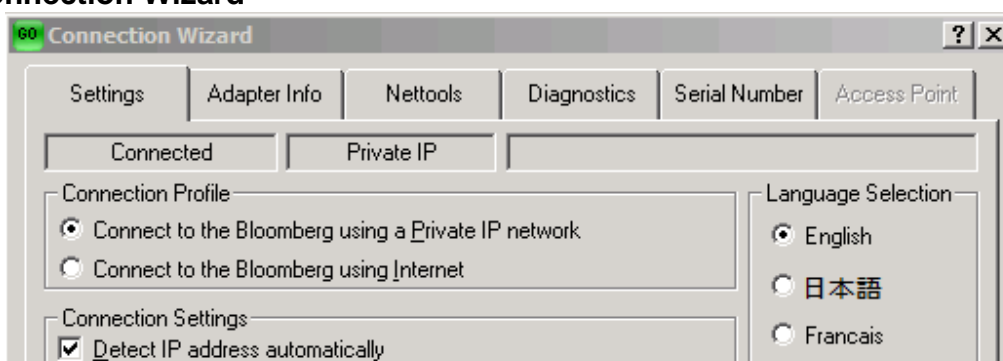
Please click  button in the Wizard if you need more assistance.

For 24 hour global customer support call +1 212 318 2000, +44 20 7330 7500, +65 6212 1000, +81 3 3201 8900 or press the HELP key twice on the BLOOMBERG PROFESSIONAL® service. **Bloomberg**



This screen will configure the desired connection method for your Bloomberg Professional® Service. The default setting is “Connect to the Bloomberg using Private IP network” as this is the most common connection type and should be selected if you are unsure which method you should be using. In any case, this setting can be changed after the installation is complete.

- **Connect to the Bloomberg using Private IP Network**
This option refers to a dedicated leased line connection via Bloomberg supplied access router(s).
- **Connect to the Bloomberg using Internet**
This option is typically used for direct Internet access to Bloomberg, or when Private IP is unavailable.
- **Connection Wizard**



The Connection Wizard is accessed by entering **CONN<GO>** on the Bloomberg Terminal or clicking on the red **CONN** button on the toolbar.

Please click  button in the Wizard if you need more assistance.

For 24 hour global customer support call +1 212 318 2000, +44 20 7330 7500, +65 6212 1000, +81 3 3201 8900 or press the HELP key twice on the BLOOMBERG PROFESSIONAL® service. **Bloomberg**



The preparation stage is complete - we are now ready install the software. Click on **N**ext to proceed, or if you need to change any of the choices you have already made, click **B**ack to review.

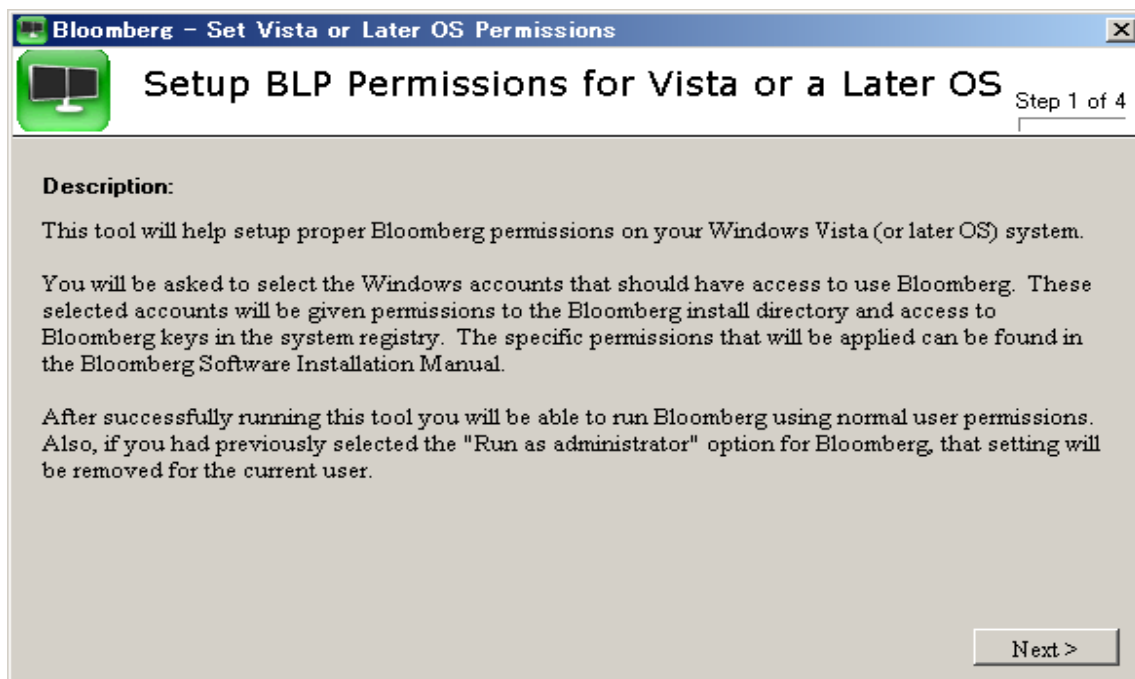
Two different Installation Complete screens based on detection of your Operating system as below.



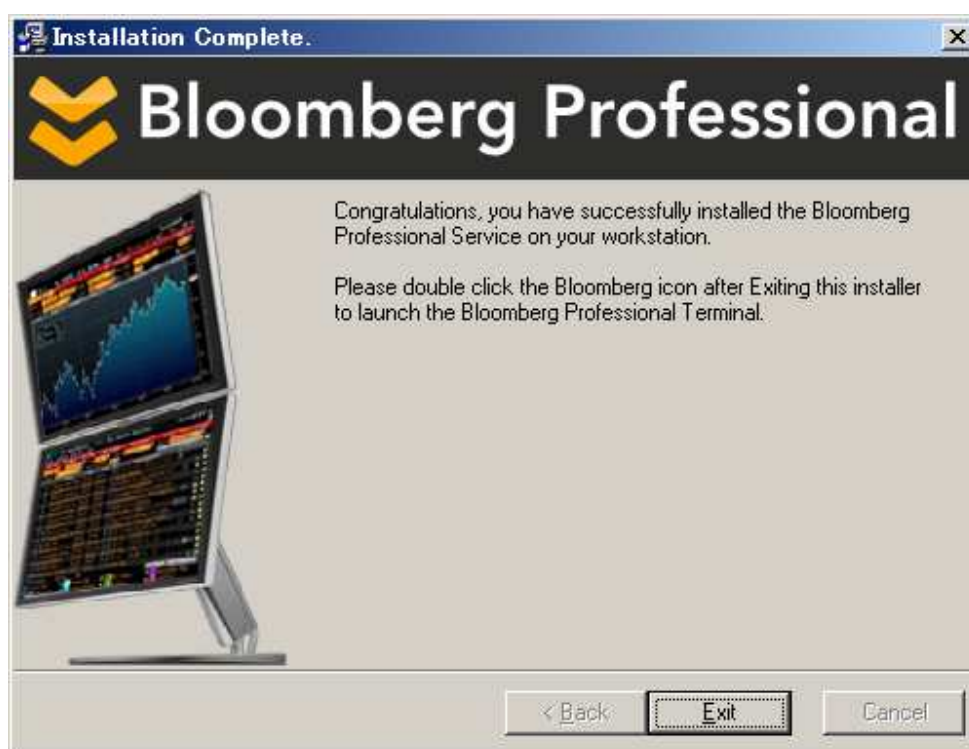
- **Windows XP and Windows 2000:** The figure above shows the installation process is now complete. After clicking **F**inish, the wizard will close and the Bloomberg Terminal will launch automatically. From now on, every time you want to use your Terminal you will be able to launch Bloomberg by double clicking the Bloomberg icon on your Desktop, or by going to Start – Programs – Bloomberg.

Please click  button in the Wizard if you need more assistance.

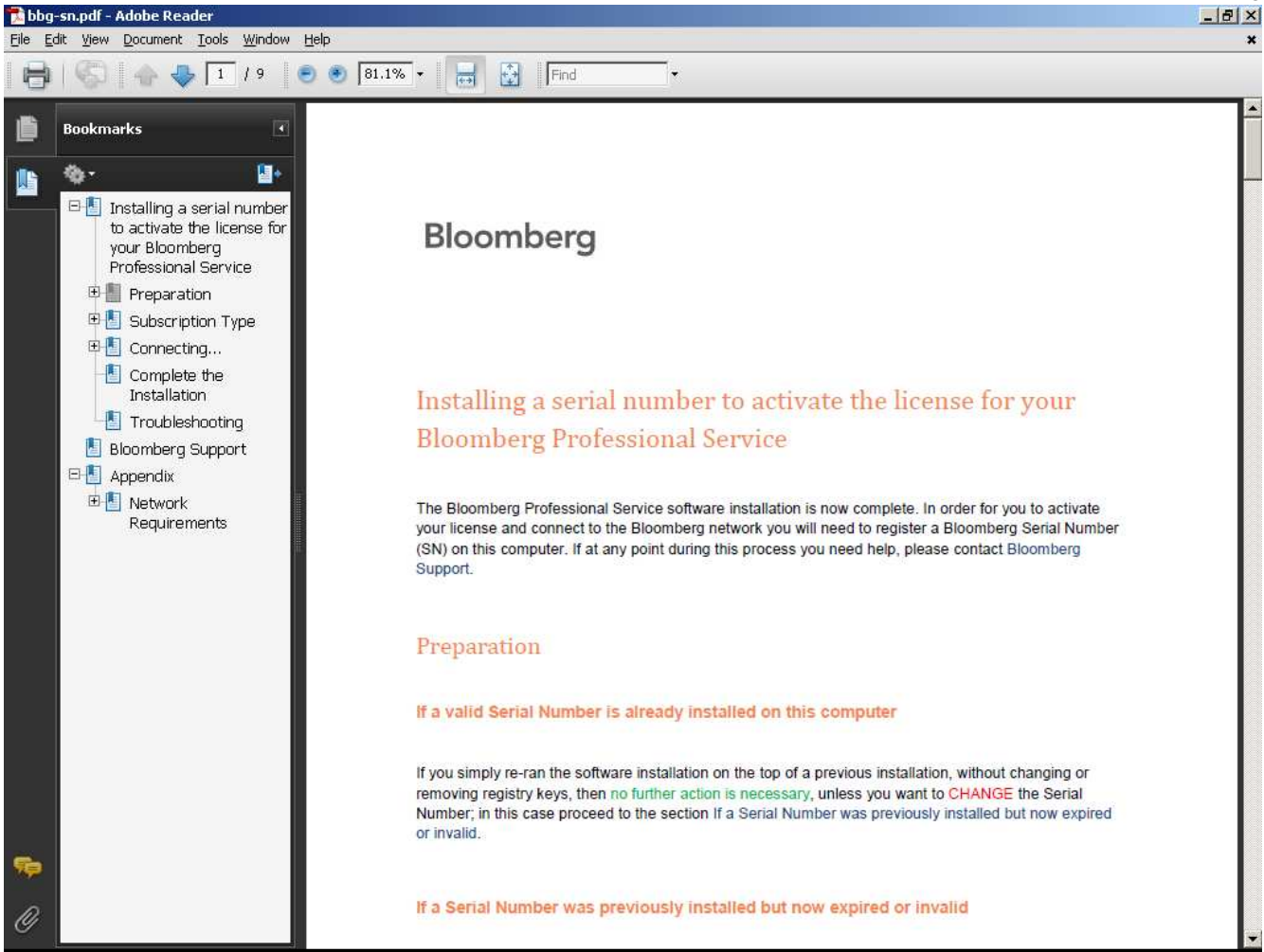
For 24 hour global customer support call +1 212 318 2000, +44 20 7330 7500, +65 6212 1000, +81 3 3201 8900 or press the HELP key twice on the BLOOMBERG PROFESSIONAL® service. **Bloomberg**



Before installation process complete, **Set Vista or Later OS Permissions** tool will come up for Windows 7 and Vista users. Please complete Set Vista or Later OS Permissions tool for the files/folders and registry in order to prevent any problem with the auto-upgrade. You can skip the **Minimum File and Registry Rights for the Bloomberg Application** section at page 15 if you complete Set Vista or Later OS Permissions tool at this stage.



- **Windows 7 and Windows Vista:** The figure above shows the installation process is now complete. After clicking Exit, you will now be able to launch Bloomberg by double clicking the Bloomberg icon on your Desktop, or by going to Start – Programs – Bloomberg.



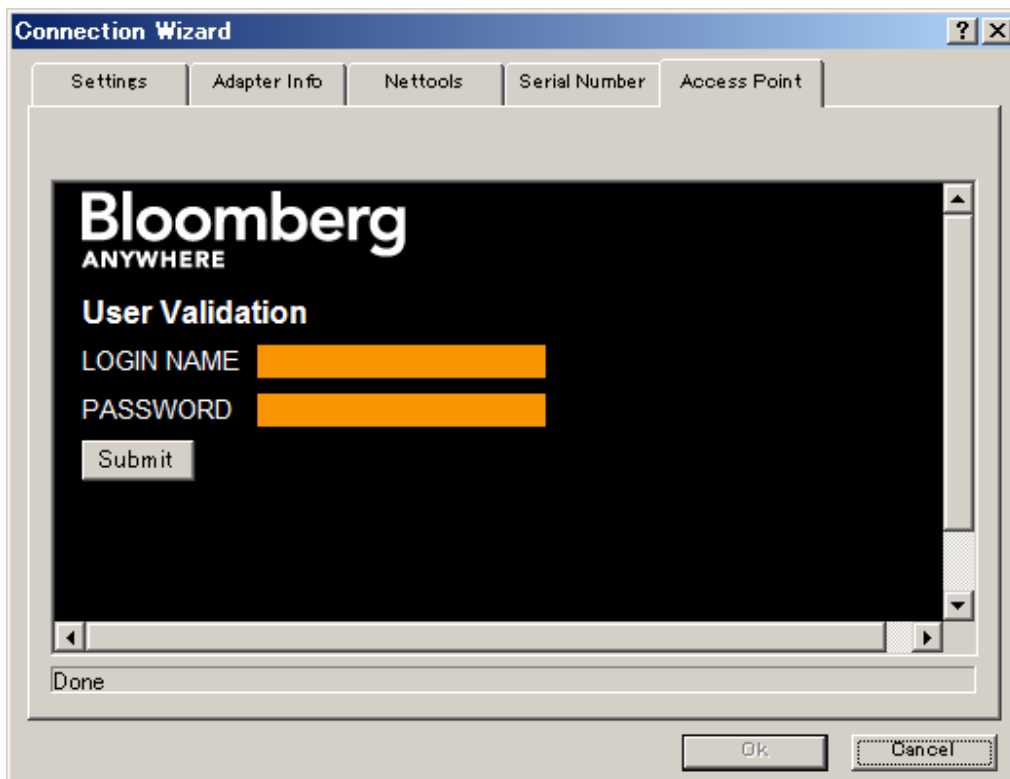
Also a PDF file will be launched automatically at end of installation to assist in activating of your terminal.

Install New Bloomberg Serial Number

There are two ways to install New Bloomberg Serial Number.

- **Access Point On Demand (APOD)** for Bloomberg Anywhere users.
Access Point On Demand (APOD) has been designed to allow a user to create a configured Bloomberg Access Point, without interaction with a Bloomberg representative.
- **Install new serial number** for Terminal Based License users.
Install new serial number option is for Terminal Based License users (Non-Bloomberg Anywhere users).

Access Point on Demand (APOD) Creation Steps



1. Launch the Connection Wizard by double clicking the Bloomberg icon on your Desktop, or by going to Start – Programs – Bloomberg. Select the Access Point tab, enter LOGIN NAME and PASSWORD. Click Submit.

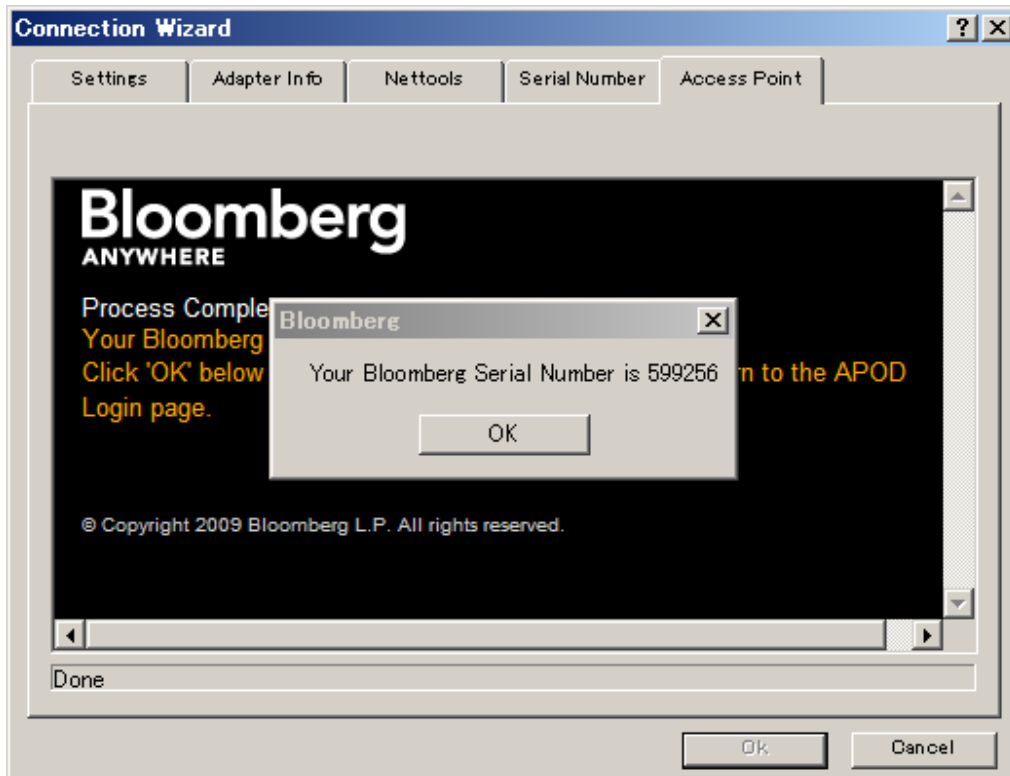
If connection via Private IP has been established proceed to Step 3. If connection via Internet has been established proceed to Step 2.



2. The User is then prompted to perform a screen-sync and to enter the B-Unit code. Click Submit.



3. Users will be prompted with an optional CSR code field that is used as the customer's internal reference. Click Submit.

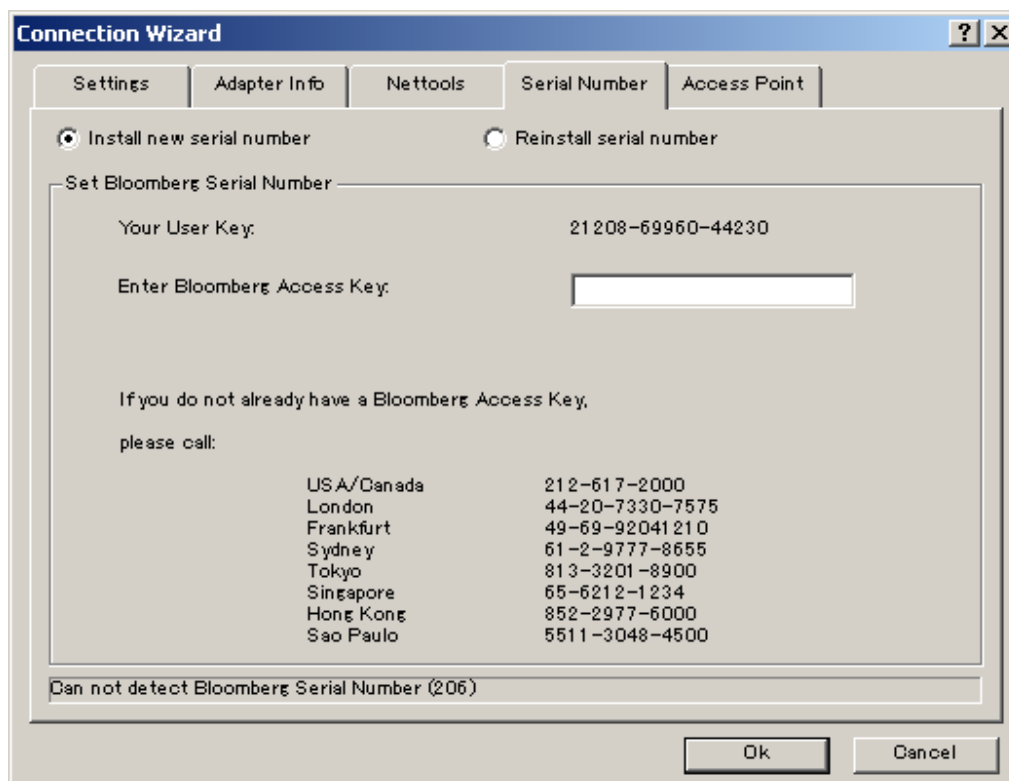


4. The above Bloomberg message will appear after the user's credentials have been validated. Click OK.



5. Click OK. At this point you will be required to log into Bloomberg as normal using your Login name, password and B-Unit.

Install new serial number



Launch the Connection Wizard by double clicking the Bloomberg icon on your Desktop, or by going to Start – Programs – Bloomberg. Select the Serial Number tab and click Install new serial number option. At this time, contact your local Bloomberg Installations representative for further instruction.

Testing the Bloomberg Terminal

TOUR INSTALL

This program ensures that BLOOMBERG PROFESSIONAL terminals are installed properly and have access to all standard functions. To run the program, type TOUR INSTALL from the **1-Bloomberg** "Cancel" page and press <Enter>. The system will log in, using TOUR as the user name. After login has been completed, the following **Select a Language** and **TOUR INSTALL** main menu page will appear with 8 options:

<HELP> for explanation, <MENU> for similar functions. P089 Govt TTST

TTST - Select a Language

Preferred Language	Action
1) English	Select a language in which you would like to continue this test.
2) 日本語	このテストを実行する言語を選択してください。
3) Français	Sélectionnez la langue avec laquelle vous souhaitez faire le test
4) Deutsch	Wählen Sie eine Sprache, in der Sie den Test fortsetzen möchten!
5) Español	Seleccione un idioma en que desearía seguir esta prueba.
6) Português	Selecione o idioma que deseja continuar este teste.
7) Italiano	Selezionare una lingua con la quale volete continuare questo test.
8) 繁體中文	請選擇您偏好的語言以進行此測試。
9) 한국어	해당 테스트를 계속하고자 하는 언어를 선택하세요.
10) 简体中文	请选择测试采用的语言。

<HELP> for explanation, <MENU> for similar functions. P145 Govt TTST

<MENU> to return

TTST - Terminal Test

The following series of tests ensure that the Bloomberg Professional terminal is installed and functioning properly. Any functions required during the testing process will be run on the secondary screen. Please select a test below to continue. Hit <MENU> at any time to return to this screen.

Launch Test	Test Status
1) Software Update	Not Performed
2) Keyboard Test	Not Performed
3) PDF Download	Not Performed
4) Bloomberg Video/Audio	Not Performed
5) Bloomberg API	Not Performed
6) Bloomberg Smart Client	Not Performed
7) Web Access	Not Performed
8) Printing	Not Performed

9) [Contact our Global Customer Support](#)
Click here if you need additional assistance for the preceding tests

TOUR INSTALL Menu Item Descriptions

1. Check Bloomberg Software versions
2. Set your Keyboard type
3. Check if PDF file is downloaded and displayed correctly
4. Check if audio/video is functioning properly using VID function
5. Check BBCOM/API DEMO is running properly and API data can be downloaded
6. Check if Smart Client is functioning properly using FFIP function
7. Check Bloomberg web site can be displayed properly on Bloomberg screen
8. Check if Bloomberg screen is printed out correctly

Minimum File and Registry Rights for the Bloomberg Application

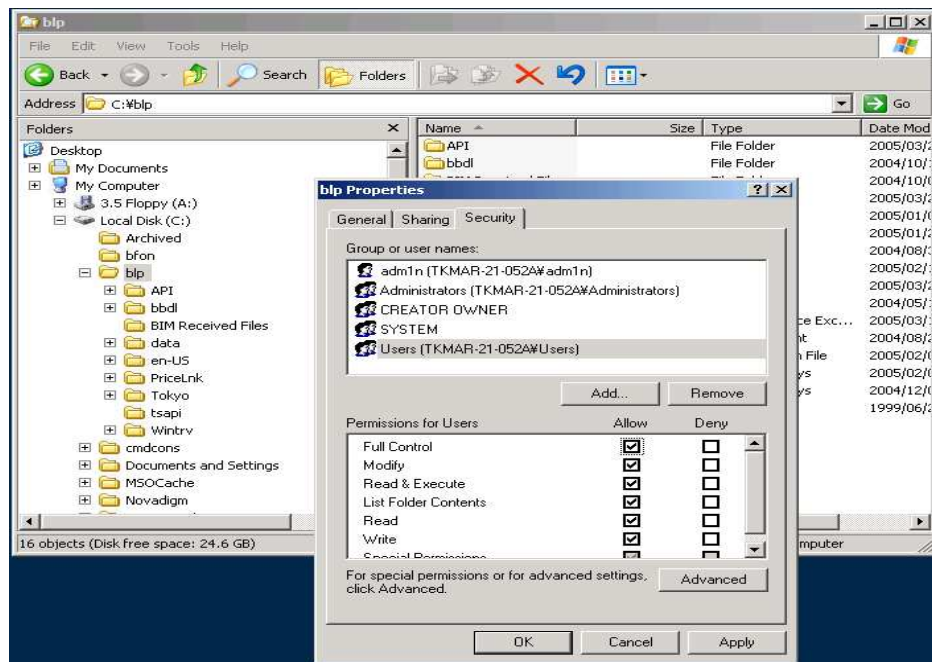
Bloomberg software is upgraded automatically every month. Please keep in mind to set up the permissions for the files/folders and registry in order to prevent any problem with the auto-upgrade, by taking the following steps:

Log into Windows as an Administrator and install the Bloomberg software.

Set up full-access to Bloomberg folder/sub folders permission for Windows User who uses Bloomberg. Bloomberg is installed under c:\blp by default.

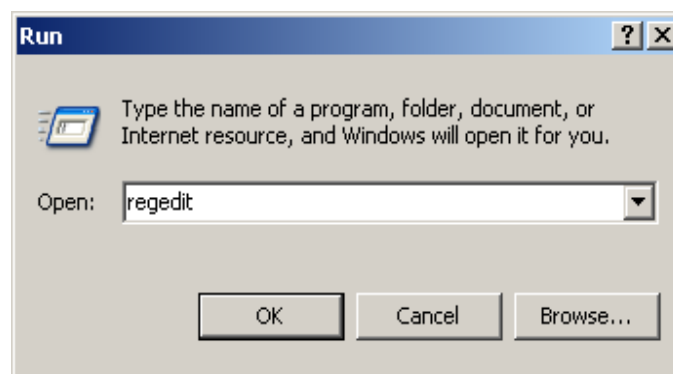
Open Windows Explorer. Right-click on Bloomberg folder and go to [Properties].

On Security Tab, choose appropriate Group or User name and click 'Full Control' for Permissions.



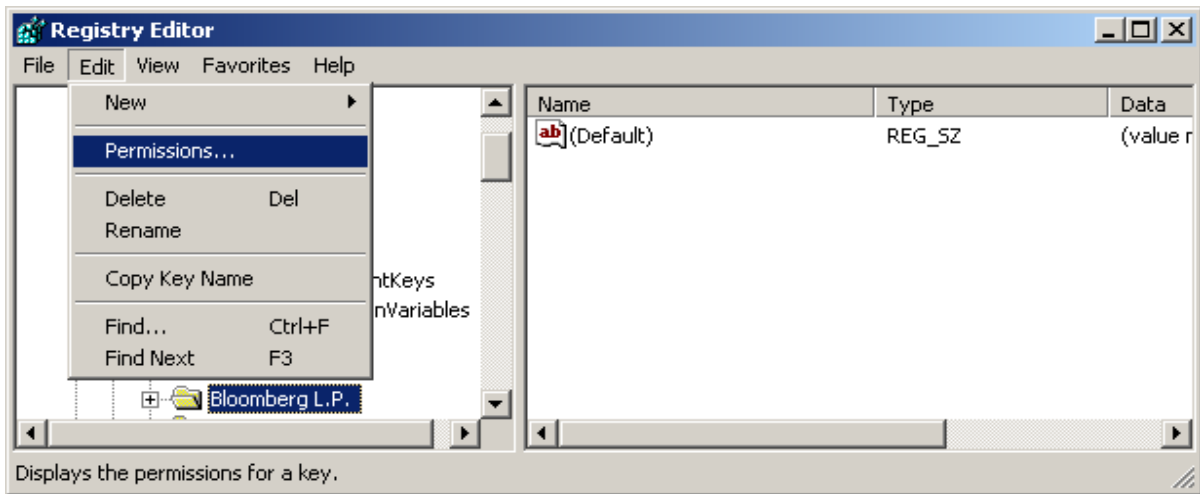
Set up full-access or the following necessary keys to Bloomberg software for appropriate group/user. Necessary Keys: [Query Value], [Set Value], [Create Subkey], [Enumerate Subkeys], [Delete], [Read Control], [Notify].

Click [Start] and go to [Run...]. Type in **regedit** to open Registry Editor for Windows 7, Vista and Windows XP. Type in **regedt32** to open Registry Editor for Windows 2000.

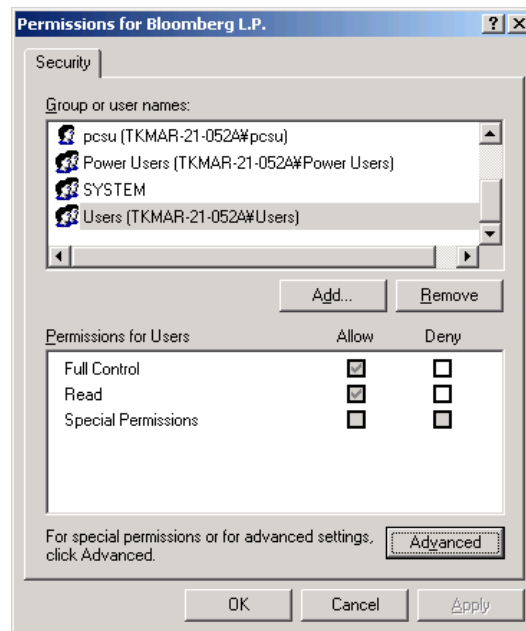


For 24 hour global customer support call +1 212 318 2000, +44 20 7330 7500, +65 6212 1000, +81 3 3201 8900 or press the HELP key twice on the BLOOMBERG PROFESSIONAL® service. **Bloomberg**

Click on “HKEY_LOCAL_MACHINE\SOFTWARE\Bloomberg L.P.” for 32-bit Operating System, Click on “HKEY_LOCAL_MACHINE\SOFTWARE\Wow6432Node\Bloomberg L.P.” for 64-bit Operating System, and go to [Permissions...] located under the Edit menu as depicted below.



Choose appropriate Group or User name and click 'Full Control' for Permissions or click 'Advanced' to set up minimum keys.



NOTE: In case the Bloomberg user is not a Windows Administrator or Power User, the following keys need to be set up the same. Repeat steps 5 and 6 for the following keys.

◆ HKEY_LOCAL_MACHINE\SOFTWARE\Microsoft\Windows\CurrentVersion\Uninstall

Users can have the rights listed below instead of Uninstall.

◆ HKEY_LOCAL_MACHINE\SOFTWARE\Microsoft\Windows\CurrentVersion\Uninstall\Bloomberg Excel Tools
(Excel2002 or higher)

For 24 hour global customer support call +1 212 318 2000, +44 20 7330 7500, +65 6212 1000, +81 3 3201 8900 or press the HELP key twice on the BLOOMBERG PROFESSIONAL® service.

Bloomberg